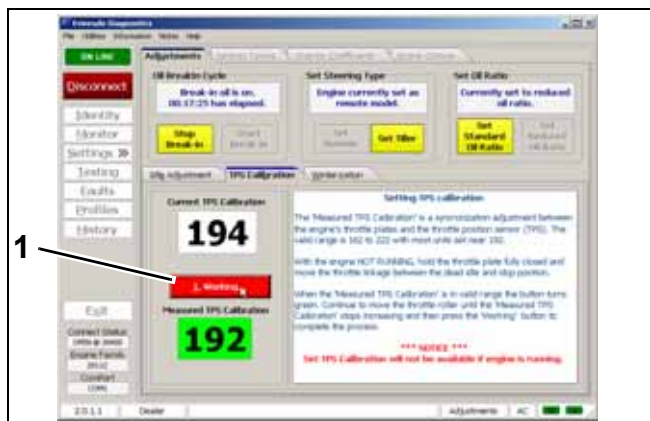


## TPS Calibration

Use *Evinrude Diagnostics* software to tell the *EMM* what throttle position sensor voltage is when the throttle plates begin to open.

Remove the air silencer.

On the *Settings* screen of the diagnostics software, click the “Set TPS Calibration” button.



1. TPS Calibration button

006548

While holding the throttle plates closed, advance the throttle linkage until it stops. The “Measured TPS Calibration” field on the screen will increase.

Click the “Working” button in the software to calibrate the TPS.

Install the air silencer.

Set TPS Calibration after replacing or adjusting any throttle body or throttle linkage parts.

## ELECTRIC STARTER SERVICING

### Starter Removal

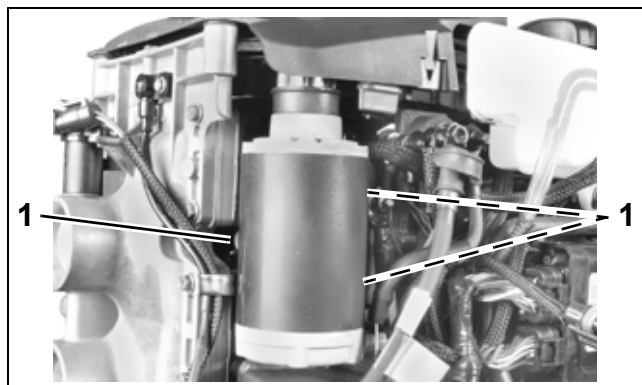
**IMPORTANT:** Do not clean the starter drive while the starter motor and drive are installed on the powerhead. The cleaning agent could drain into the starter motor, washing dirt from the drive into the starter bearings and commutator.

Disconnect the battery cables at the battery.

Remove lower motor covers and air silencer. Refer to **Lower Cover Removal** on p. 82.

Remove the starter positive (+) cable from post on starter. Remove the battery negative cable (-) from the double-ended stud.

Remove two starter mounting screws and double-ended stud. Remove the starter.



1. Screws

002293